

日期
2009

客户
卡塔尔基金

占地面积
200 000m²

建筑面积
230 000m²

住房面积
193 000m²

公用面积
8500m²

商业面积
1500m²

公寓套间
一居室824套
两居室1021套
三居室184套
四居室20套
别墅76套

2008年, AJ+C建筑设计公司受卡塔尔基金 (Qatar Foundation) 委托参加了一次国际建筑设计大赛, 为卡塔尔多哈大学城锡德拉医药研究中心进行占地20公顷的员工住房用地开发设计。

AJ+C进行了初始设计, 随后与两家知名建筑设计公司奥雅纳 (Arup) 和伍兹贝格 (Woods Bagot) 合资, 为项目提供更全面的服务。最后, 三方会同其他专家顾问一起完成了最终方案的确定与展示。

设计方案名为“沙漠之冠” (Desert Canopy), 灵感来自卡塔尔的自然风貌, 特别是Dukhan砂岩地貌和移动沙丘景观。AJ+C还在建筑上采用了大量几何设计与伊斯兰装饰风格。

整个员工住房项目位于锡德拉医药研究中心附近一个独立区域, 有2000多套公寓和别墅, 划分为三个独立的建筑群, 分别供医生、护士和行政人员居住。

建筑群的中心地带是会所或礼堂, 配有池塘和户外休闲娱乐区, 从不同寓所均可方便到达, 有助于开展社交活动。此外还有一个综合社区中心, 里面建有商店、咖啡馆、餐厅、清真寺、日托中心、室内运动场和维修站等。

另一个重要公共区域是石柱走廊, 沿着社区大道蜿蜒向前, 穿过整个居住区, 能够让人们避开卡塔尔严酷的气候, 享受片刻凉爽。社区干道途经所有露天区域, 四通八达, 将几个建筑群连接在一起。

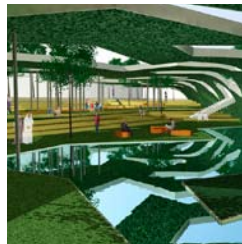
社区建筑大量的景观屋顶设计能够隔热遮荫, 非常适合卡塔尔的炎热气候。精致的屋顶还使四周的公寓建筑构成了美丽的花园景观。每个泳池区都绿意盎然, 地势低下, 不仅更加阴凉, 还能更好地保护游泳者的隐私。几个花园也采用了下沉式庭院设计, 一部分位于地下, 更加凉爽。

受当前经济形势影响, 卡塔尔基金决定不再继续参加国际设计大赛招标。

锡德拉医药研究中心
(SIDRA MEDICAL RESEARCH
CENTRE STAFF HOUSING)
员工住房
卡塔尔多哈大学城

AJ+C

SIDRA MEDICAL RESEARCH CENTRE STAFF HOUSING +



Completion Date

2009

Client

Qatar Foundation

Site Area (m²)

200 000m²

GFA (m²)

230 000m²

Residential Area

193 000m²

Public Area

8500m²

Commercial Area

1500m²

Apartments

824 one bedroom
1021 two bedroom
184 three bedroom
20 four bedroom
76 villas

**SIDRA MEDICAL
RESEARCH CENTRE STAFF
HOUSING**

Education City, Doha, Qatar

AJ+C

In 2008, AJ+C was invited by the Qatar Foundation to participate in an international competition to design a large scale residential development on a 20 hectare site for the staff of Sidra Medical Research Centre at Education City, Doha, Qatar. AJ+C initiated the design and subsequently formed a joint venture with Arup and Woods Bagot to provide full service delivery for the project and all three parties contributed to the final scheme and presentation, along with input from other consultants.

The scheme, entitled the "Desert Canopy", gained inspiration from the Qatar landscape, in particular, the table mountains of Dukhan Anticline and the shifting sand dunes. AJ+C also looked to the rich use of geometry in the buildings and decorative arts of the Islamic world. The brief for the staff housing of the Sidra Medical Research Centre, called for a self-contained neighbourhood in close proximity to the Centre, consisting of over 2000 apartments and villas for doctors, nurses and administrative staff, with separate compounds for the three tiers of staff.

Central to each compound is the clubhouse or community hall with pool and outdoor entertainment area, all easily accessible from each dwelling to encourage socializing. In addition, there is a neighbourhood centre which comprises the general store, coffee shop/restaurant, mosque, day care centre, indoor sports centre and maintenance depot. Another significant public space is the pedestrian colonnade that winds its way through the development along the main street, providing relief from the harsh Qatar climate. The main street meanders its way through the site 'opening up' at changes in direction and intersections in the course of which it unites the compounds.

The large landscaped roofs of the community buildings provide insulation and generous shade canopies for the spaces below, which are advantageous to the severe Qatar climate. These rooftops also provide garden views for the surrounding apartment buildings. Each swimming pool garden is an oasis set below street level to utilise the cooler temperatures and provide privacy for swimmers. The many parks are conceived as "sunken landscaped rooms", again, partially set into the ground to provide cooler conditions.

Due to the current economic climate, the Qatar Foundation has decided not to proceed with any of the tenders from the international design competition.