

竣工日期

成本 美元

甲方

Capitaland Management
Consulting (Shanghai) Pty Ltd

基地面积 (平方米)

297 186m²

总建筑面积 (平方米)

355 753m²

容积率

1.2:1

JIN SHA ZAO

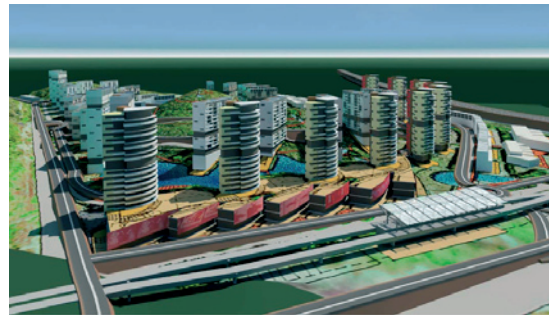
Guang Zhou, China

AJ+C公司在国际设计竞争中胜出，为金沙洲规划设计

金沙洲是广州附近正在蓬勃发展的一个城市，不久将通过一条更新高速公路与香港相连接。金沙洲

的项目计划于2010年完工，总面积27公顷，是集民用住宅，零售以及社区服务设施于一体的项目。

此设计注重适用与居民需求相结合，同时照顾到相互的联系性以及自然环境。多山的地形，茂盛的林木，以及水游乐场，这项总体设计把民用住宅与回归自然相揉合，让居民生活在春夏秋冬四季分明的大花园环境中。



Completion Date
competition

Cost \$US
-

Client
Capitaland Management
Consulting (Shanghai) Pty Ltd

Site Area (m²)
297 186m²

GFA (m²)
355 753m²

FSR
1.2:1

JIN SHA ZAO
Guang Zhou, China

Won through an international competition, AJ+C has designed a dynamic neighbourhood at Jin Sha Zhou in the Pearl River delta, Southern China.

Jin Sha Zhou is a developing area just outside the city of Guan Zhou, soon to be connected to Hong Kong via an upgraded freeway. Scheduled for completion in 2010, the 27-hectare site will integrate residential, retail and community facilities over four stages.

The design objective balanced pragmatic and civil requirements of the project while retaining a strong connection to the landforms and the natural environment. The terrain is hilly, and in parts, densely forested. There are also established waterways and aqua-culture systems - all of which have been retained. The masterplan links the residential zones back to the natural forest with a series of stylised seasonal gardens – spring, summer, autumn, winter.