

竣工日期

成本 美元

甲方

Appleyard Forrest  
Consulting Engineering  
Pty Ltd

基地面积 (平方米)

总建筑面积 (平方米)

容积率

HOHHOT AND  
HEISHANTOU  
Heishantou, Inner  
Mongolia

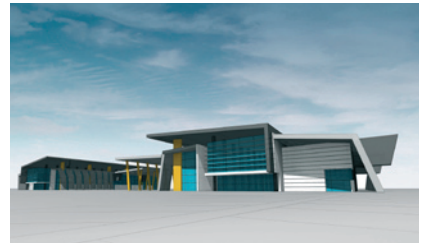
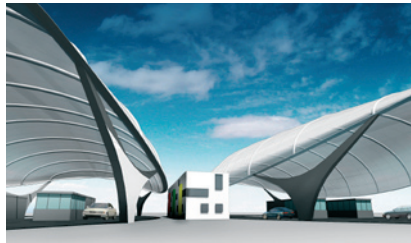
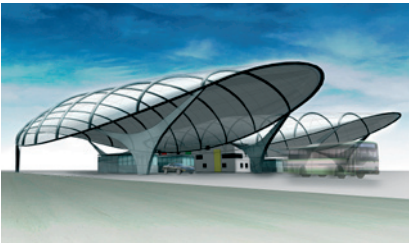
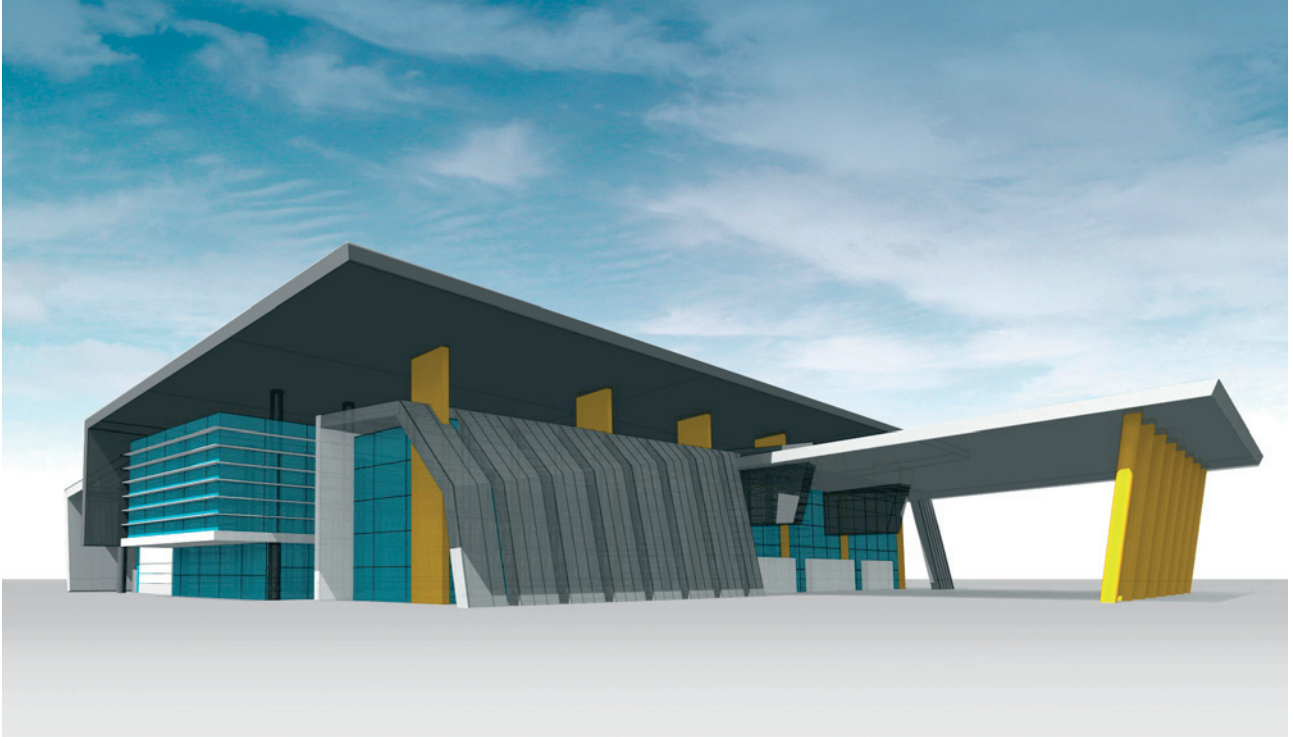
AJ+C

AJ+C公司将为内蒙古的5年城市和交通规划做贡献

呼和浩特是内蒙古的首府，是连接中国与俄罗斯以及外蒙古的门户。由于当地恶劣的气候条件，交通的建设成为未来发展的关键。

为了适应未来20年呼和浩特的经济发展的需要，市政府委托AJ+C公司设计一条长45公里的呼和浩特市环城公路，环城公路全程要兴建高质量的路沿和排水沟，用于分道的树，还要有自行车道和公车专用道以及富有层次的绿化带。

这第二个主要项目对位于呼和浩特东北1500公里的黑山头来说，更是一个重要的交通中心网络的建设项目，是重要门户通道，是包括卡车，汽车和火车的民用商用机场项目，建筑包括机场建筑，独立的民用和商用汽车，火车建筑以及乘客候机大楼，总面积达6平方公里。



**Completion Date**

-

**Cost \$US**

-

**Client**

Appleyard Forrest  
Consulting  
Engineering Pty Ltd

**Site Area (m<sup>2</sup>)**

-

**GFA (m<sup>2</sup>)**

-

**FSR**

-

HOHHOT AND  
HEISHANTOU  
Heishantou, Inner  
Mongolia

AJ+C is contributing to a visionary five-year urban and transport plan for Inner Mongolia.

The region and its capital, Hohhot, are the gateway and transport hub for all traffic between China, the Russian Federation states, and Mongolia. In this harsh climate, transport is a vital key to prosperity and growth.

To meet the rapid growth of Hohhot over the next 20 years, city authorities commissioned AJ+C to design a 45km ring road around the capital. The ring road is distinguished by high quality kerbs and gutters, seven rows of mature trees, dedicated lanes for public transport and bikeways, and extensive landscaping.

The second major project envisages a major transport 'hub' and gateway at Heishantou, approximately 1500km northeast of Hohhot. The Hub - or 'land port' - is essentially an airport terminal for trucks, cars and trains. It comprises a terminal building, separate processing areas for domestic and commercial vehicles, trains, and a passenger terminal with a gross site area of approximately 6km<sup>2</sup>