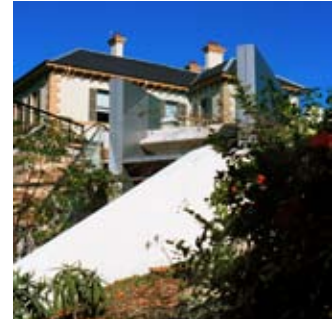


ESD - REDLEAF, WOOLLAHRA + MUNICIPAL COUNCIL



获得奖状

- 2002 Royal Australian Institute of Architects (RAIA), Environment Award Energy Efficient Design
- 2002 Royal Australian Institute of Architects (RAIA), Conservation Award
- 2001 TAS & Francis Greenway Society, Bronze Medal, Green Building Awards (in association with Advanced Environmental Concepts)
- 2001 Energy Australia National Trust Heritage Awards, Winner Adaptive Reuse, Corporate/Government C1 (in association with Design 5)
- 2001 Master Builders Award (in association with Buildcorp)

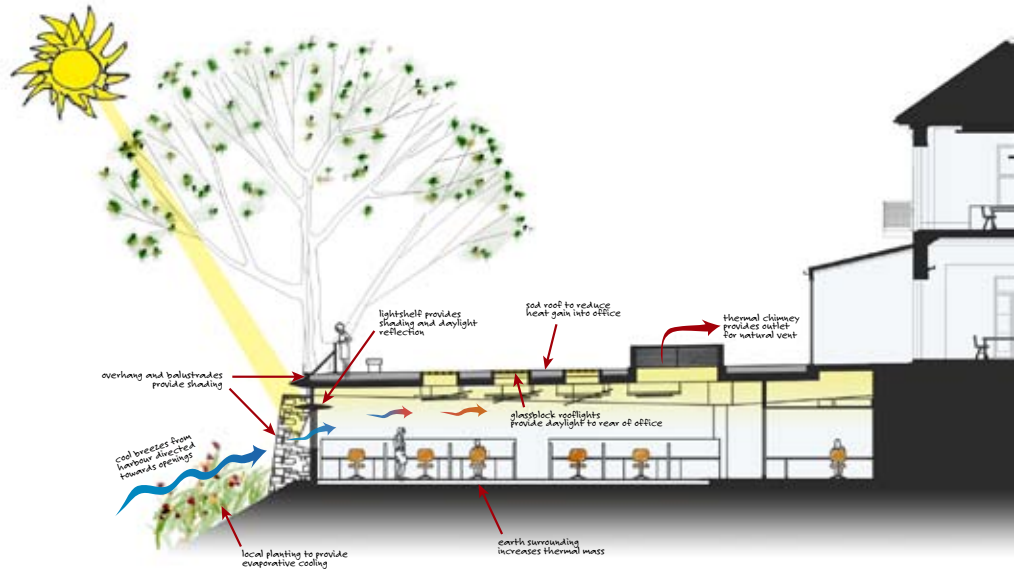
通过开发这一重要历史性住宅的适应性新用途，呈现了一处使怀旧格调与可持续发展达到完美均衡的新办公场所。Redleaf Park座落于富含景观的花园中，是政府在悉尼港临水的东部城区中拥有的最大地块。为了最大程度地融入周围景观，总体规划再现意大利景观理念，将大楼设计于升高的平台上，并将北侧优美的港湾景色用植物围绕。

REDLEAF - WOOLLAHRA
MUNICIPAL COUNCIL

536 New South
Head Road
Double Bay NSW
Australia

AJ+C

ESD - REDLEAF, WOOLLAHRA + MUNICIPAL COUNCIL



修复原有大楼中最重要的工作是，将2000平方米新办公设施融入这一具历史意义的场地中。AJ+C所提供方案的关键是对现有建筑进行适应性改造，而不是突兀地添加。通过移除不和谐的添加部分、把新办公住宿设施藏入旧楼前的花园之下，并将新花园前院延伸贯串新建筑，从而使原有大楼的风貌得以恢复。



ESD - REDLEAF, WOOLLAHRA + MUNICIPAL COUNCIL

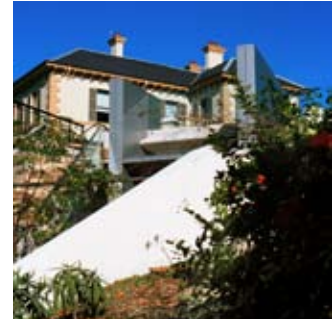
“Adaptive reuse is increasingly seen as an alternative to the either/or scenario of demolition or sentimental preservation. With their award-winning restoration and extension of Woollahra Council’s Redleaf Building Allen Jack+Cottier have enhanced a beautiful and iconic site on Sydney’s Eastern suburbs foreshore.” Paul McGillick, Monument, August/September 2001



新办公空间采用前沿“环保”科技。75%的时间中，自然冷却、通风及照明系统取代人工支持系统，使运营成本大幅降低。在室温到达预设（及可调控）温度前由自然通风系统进行工作，在到达预设温度后，则自动转为空调系统。设于办公区域后部的热气流烟囱在提供通风的同时，也与覆土屋顶和墙壁一起，协助调节建筑内部温度。

Curved Perspex®的反射材料将日光通过光井散射入办公空间中，而建筑外部的光架和竖片则为窗户反射阳光，为市政厅员工创造了独特宜人的办公环境，并大大改善了舒适度。

ESD - REDLEAF, WOOLLAHRA + MUNICIPAL COUNCIL



Awards

- 2002 Royal Australian Institute of Architects (RAIA), Environment Award Energy Efficient Design
- 2002 Royal Australian Institute of Architects (RAIA), Conservation Award
- 2001 TAS & Francis Greenway Society, Bronze Medal, Green Building Awards (in association with Advanced Environmental Concepts)
- 2001 Energy Australia National Trust Heritage Awards, Winner Adaptive Reuse, Corporate/Government C1 (in association with Design 5)
- 2001 Master Builders Award (in association with Buildcorp)

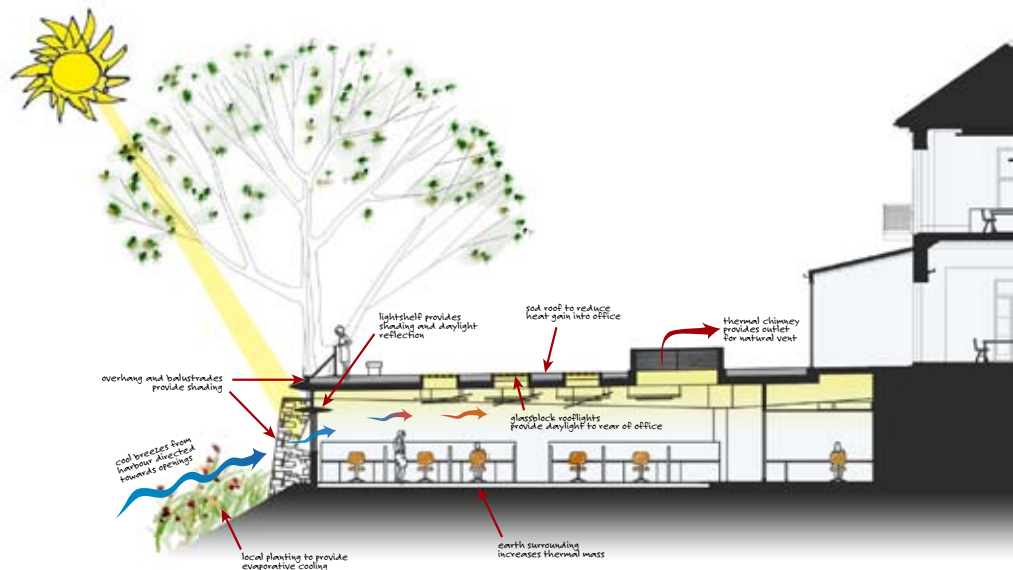
Set in extensive landscaped gardens, Redleaf is one of the few surviving mid-nineteenth century grand mansions that once dominated the eastern foreshore of Sydney Harbour. The Victorian Italianate style home was constructed in 1863 as the residence for William Benjamin Walker, the son of a leading colonial trader, and has been occupied by Woollahra Council since the 1960s. Allen Jack+Cottier's sensitive adaptive reuse of the grand historic home to provide new office space for the Council juxtaposes contemporary elements with historical character. Rather than an arranged marriage of old and new, the design is more a union of equal partners, in which the old and the new enhance each other. The project is a good example of the innovation, lateral thinking and integration of architecture, landscape, urban and sustainable design offered by Allen Jack+Cottier.

REDLEAF - WOOLLAHRA
MUNICIPAL COUNCIL

536 New South
Head Road
Double Bay NSW
Australia

AJ+C

ESD - REDLEAF, WOOLLAHRA + MUNICIPAL COUNCIL



Redleaf Park is the largest government owned landholding on the eastern suburbs foreshore of Sydney Harbour. Allen Jack+Cottier's masterplan for the Park recreated the Italian landscape concept of a mansion on a raised terrace, with plantings arranged to frame the sensational harbour views to the north.

Central to the restoration of the original mansion was the sensitive integration 2,000m² of new office facilities into the heritage site. Rather than provide yet another crude add-on, the key to Allen Jack+Cottier's solution lay in the innovative adaptive reuse of the existing building. Through the removal of unsympathetic additions and the burying of the new office accommodation in front of the old house (and below the garden), and extending a new garden forecourt across the new building, the grandeur of the original mansion has been restored.



ESD - REDLEAF, WOOLLAHRA + MUNICIPAL COUNCIL

“Adaptive reuse is increasingly seen as an alternative to the either/or scenario of demolition or sentimental preservation. With their award-winning restoration and extension of Woollahra Council’s Redleaf Building Allen Jack+Cottier have enhanced a beautiful and iconic site on Sydney’s Eastern suburbs foreshore.” Paul McGillick, Monument, August/September 2001



The new office space is at the forefront of ‘green’ technology. Natural cooling, ventilation and lighting systems replace artificial support systems 75 percent of the time, bringing significant savings in running costs. The natural ventilation system operates until it reaches predetermined (and controllable) temperatures, when an air-conditioning system cuts in. Thermal chimneys at the back of the office area provide ventilation and help to moderate internal temperatures, aided by the earth-sheltered roof and walls. Curved Perspex® reflectors diffuse sunlight entering the office space from the lightwells on the terrace, while light shelves and vertical fins on the exterior of the building reflect light from the windows. The outcome is a unique and comfortable working environment for the Council staff, and greatly increased amenity of the civic centre.